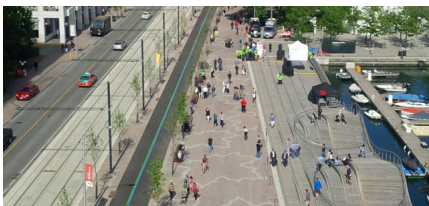


# QUEENS QUAY BOULEVARD

2006-2015, Toronto, Canada



Queens Quay, which runs east-west parallel to the lakefront, is Toronto's main waterfront street. This 1.7km (2 mile) waterfront boulevard, which was officially opened in June 2015, was designed by West 8 in collaboration with DTAH and developed by Waterfront Toronto.

The redevelopment of Queens Quay is one of the sub-projects from the 2006 award-winning [Toronto Central Waterfront master plan](#).

The reconstruction of Queen Quay noticeably reorganizes traffic: it reduces the number of lanes of traffic on the street from four to two, places a

dedicated Light Rail Transit (LRT) Corridor in the middle, and adds wider granite sidewalks on both sides of the street. The waterfront Martin Goodman Trail (a multi-use recreational trail) has also been extended and runs along the broad south side of the street.

The generous pedestrian sidewalk on the south side of the street includes a double row of 240 trees. Each of which are planted inside a silva cell, a hollow frame that contains a generous amount of soil for the tree while supporting the weight of the pavement above. Built-in irrigation channels in the pavement steer rainwater to the trees' roots and then the overflow into the sewer system.

Once uninviting, the opening of the new world-class Queens Quay, links major destinations along the water's edge creating a Public realm that is pedestrian and cycling-friendly. It offers a grand civic meeting place and an environment conducive to economic vitality and ground floor retail activity. The design will create a lasting legacy for the city, which is both beautiful and functional.

#### client

Waterfront Toronto

#### partners

In joint venture with DTAH

#### consultants

Design Engineer: Arup; Site Engineer: WSP Global (MMM Group); Electrical, Streetlighting and Signalization: TSL Consulting + Design Group Ltd; Structural: WSP Global (Parsons Brinckerhoff Halsall Inc.); Urban Forestry: James Urban and Associates; Quantity Surveying: A.W. Hooker Associates Ltd; Traffic Management: BA Group; Irrigation: Smart Watering Systems; Utility Coordination: DPM Energy Inc; Environmental and Geotechnical: LVM Franz, Toronto, and Golder Associates; Construction Manager: Eastern Construction Company Limited

#### awards

Toronto Urban Design Award of Excellence 2017; Consulting Engineers of Ontario, Award of Merit in Transportation 2016; CSLA Awards of Excellence honorable mention 2016; Brownie Award Best Overall Project - Neighbourhood Scale 2015; Toronto City Planning Award of Excellence 2007

#### team

Adriaan Geuze, Jelle Therry, Maarten Buijs, Ela Chojecka, Christian Gausepohl, Blair Guppy, John Payne, Lynnette Postuma, Kees Schoot, Shachar Zur