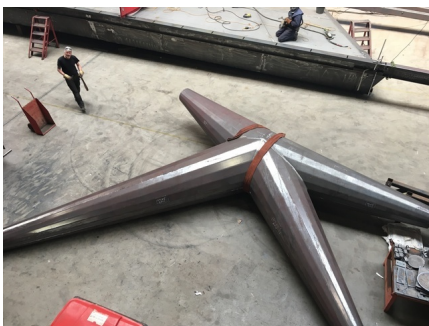


BRIDGES OF NOORDERPARK

2012-2017, Noorderpark Amsterdam, Netherlands



The 150m long bridge is the first of two bridges to connect the Volewijkspark with the Florapark, combining both into one Noorderpark. It also provides for a direct bicycle connection between the Vliegenbos and the Noorderparkbad swimming pool, thus linking the eastern and western parts of Amsterdam Noord.

The main parts of the bridge were prefabricated in parts early in 2017 in North Holland. In July, these parts were shipped to location and lifted into

place by crane on a floating pontoon. The biggest challenge in this respect was the placement of the 34m long bridge section spanning across the Noordhollandsch Kanaal. The figurative form of the bearers characterizes the bridge design by West 8.

client

Gemeente Amsterdam

partners

ABT

consultants

Adviseur Uitvoering: Witteveen & Bos; Aannemer: Friso Civiël, Boorsma Ingenieursbureau, Machinefabriek Rusthoven, Nauta, Knol Akkrum, SSAB, Dekensgroep, Braspenning

team

Gaspard Estourgie, Adriaan Geuze, Juan Figueroa Calero, Joost Koningen, Ronald van Nugteren