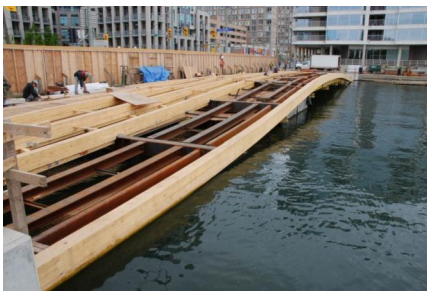
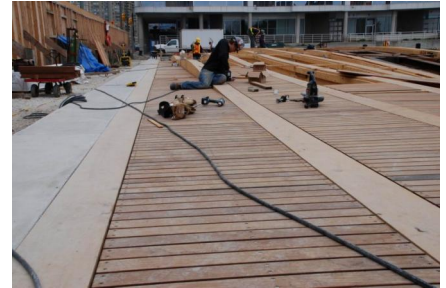


# TORONTO WATERFRONT CONSTRUCTION IN-PROGRESS

27-05-2008



Construction on Spadina Wavedeck is underway, marking the start of the first phase of implementation projects on the Toronto Central Waterfront. Spadina Wavedeck will be the first in a series of seven variations of curving timber decks - simple articulations of the change in level between Queens Quay Boulevard and the water. A much needed public space gateway is created where the city kisses the lake, inspired by the sinuous contours of the shoreline of the Canadian lakefront.

West8 + DTAH

more information: [Toronto Central Waterfront](#)